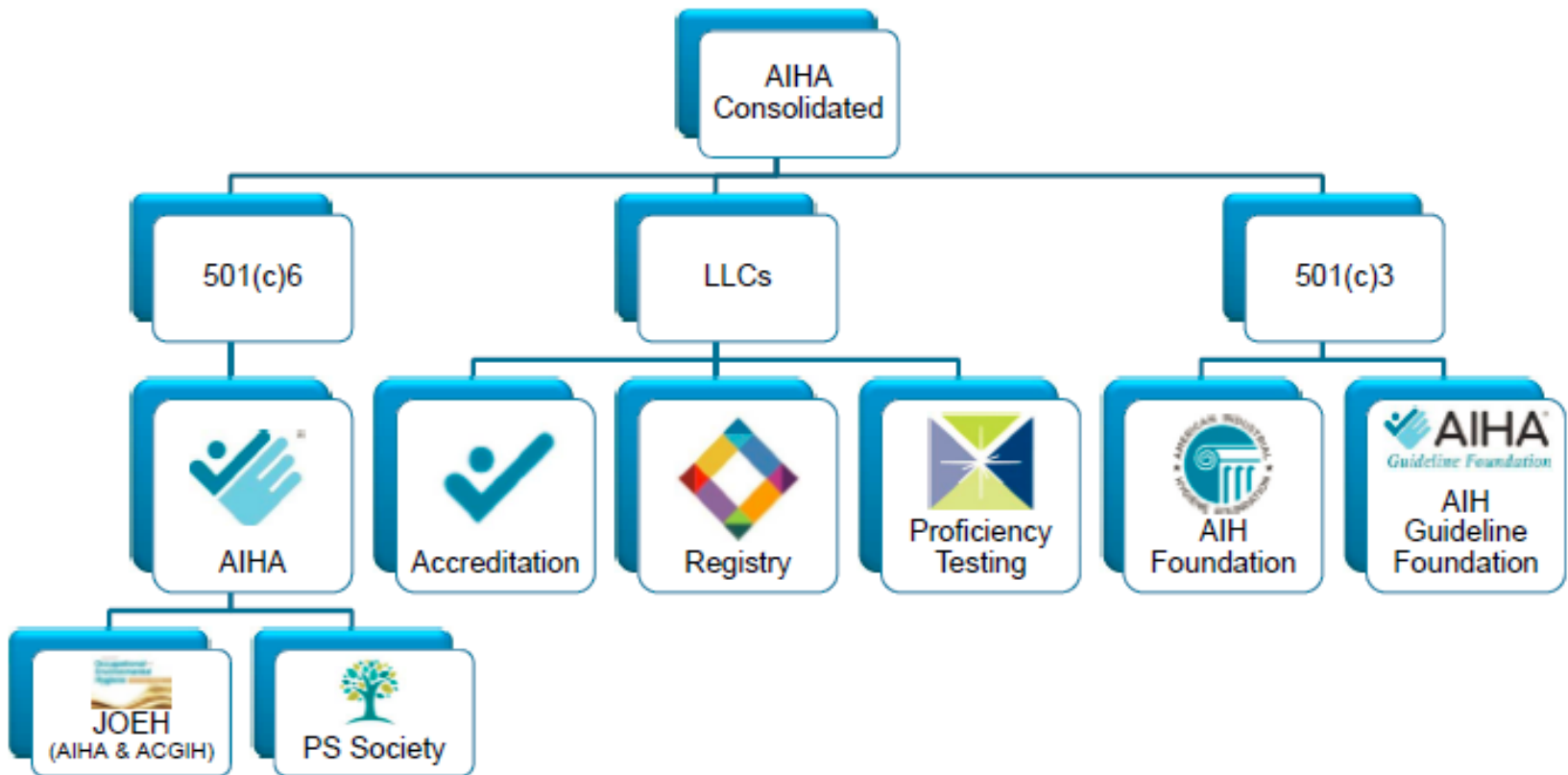


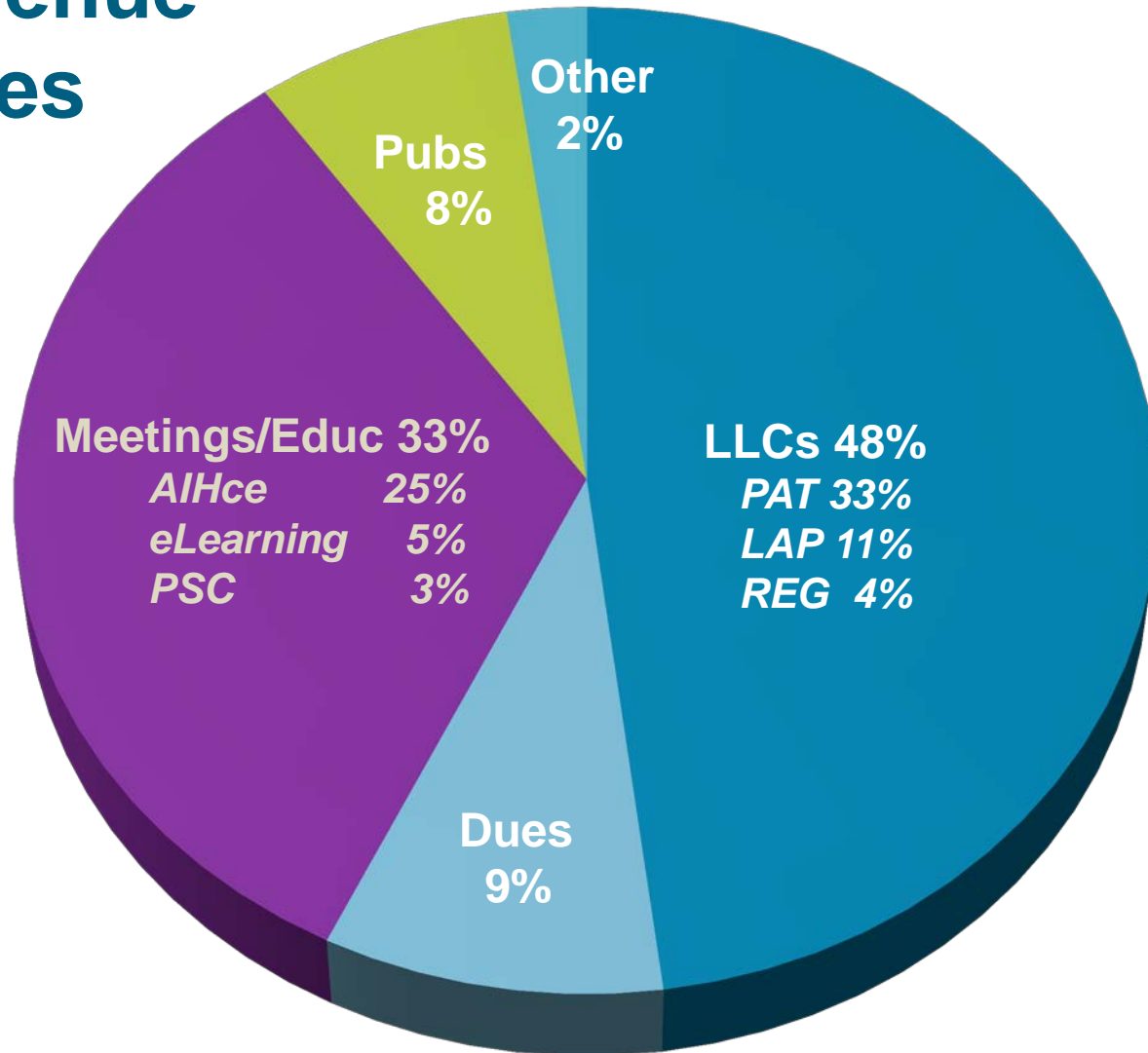
# AIHA National Update

Cynthia A. Ostrowski, AIHA President 2018-19

# AIHA Organization Structure



# 2019 Revenue Sources



# AIHA Strategic Plan (2019-21)

**Our Mission** - *Empowering those who apply scientific knowledge to protect all workers from occupational hazards*

**Our Vision** – *A world where all workers are healthy and safe*

# Domains/Success Statements

1. **Community:** AIHA will foster networking, communication, engagement and interaction in our membership and among our professional communities, and work towards achieving common goals.
2. **Awareness:** AIHA will promote the practice of IH to increase awareness of its value and to sustain the future of our organization and profession.
3. **Advancement / Dissemination of Knowledge:** AIHA will explore, develop and deliver cutting-edge educational resources to advance the profession of industrial hygiene.
4. **Integrity of IH Practice:** AIHA will identify, develop and maintain avenues to achieve excellence in standards of IH practice.
5. **Advocacy:** AIHA will advance public-policies that protect the profession and foster worker health and safety.

# COMMUNITY



# New Membership Classes

(as a result of 2018 Bylaws amendment)

- Student
- Early-Career Professional
- Full
- Emeritus
- International
- Organizational

# What AIHA Provides to Local Sections

- Posting/Sharing Local Section Events
- Speaker Resources / Distinguished Lecturer Reimbursement
- Access to state lobbying funds
- Leadership Development via Leadership Workshop
- Online community platform, LS rooms (Catalyst)
- Conference Call Lines for Local Section Officers Call
- Website Hosting
- National Mailing List for Membership Recruitment



# What AIHA Provides to Local Sections

- Dues Renewal Program
- Electronic Balloting
- LSC Business Meeting at AIHce (AV/F&B/Supplies)
- AIHA Banner Stands
- AIHA National staffing (i.e. Thursa)
- AIHA Handout materials/giveaways
- Administration of LS scholarships via AIHF
  
- General Liability Insurance
- Directors/Officers Insurance

**2018 Local Section Operating Expenses:  
@ \$325K**

**2019 Forecasted Operating Expenses:  
@ \$375k**

# Streamlining Communications Between LSs and AIHA

- Task Force created open call process
  - included current/past LS council chairs, current/past LSRRs, early career professional LS president, AIHA Board liaisons

# Streamlining Communications Between LSs and AIHA

## Task Force Recommendations:

- discontinue LSRR program
- establish dedicated AIHA staff to LSs
- restructure LS Council to be:
  - elected LS presidents
  - elected student LS presidents
  - two AIHA board liaisons

# VOLUNTEER GROUPS

## Technical Committees

Academic Accreditation  
Academic SIG  
ACTIONS (Government Relations) Committee  
Aerosol Technology  
Biological Monitoring  
Biosafety & Environmental Microbiology  
Communications and Training Methods  
Computer Applications  
Confined Spaces  
Construction  
Environmental Issues  
Ergonomics  
Exposure & Control Banding  
Exposure Assessment  
Hazard Prevention & Engineering Controls  
Healthcare Working Group  
Incident Preparedness & Response  
Indoor Environmental Quality  
International Affairs  
Ionizing Radiation  
Laboratory Health & Safety

Legal Issues  
Leadership & Management  
Mining  
Nanotechnology Working Group  
Noise  
Occupational & Environmental Epidemiology  
Oil & Gas Working Group  
Opioids Responder  
Protective Clothing & Equipment  
Real-Time Detection Systems  
Respiratory Protection  
Risk  
Safety  
Sampling & Laboratory Analysis  
Social Concerns  
Stewardship & Sustainability  
Toxicology

# VOLUNTEER GROUPS

## Professional Development

Career & Employment Service Cmte  
Joint Industrial Hygiene Ethics Education Cmte  
Mentoring & Professional Development Cmte  
Minority SIG  
Students & Early Career Professionals Cmte  
**Women in IH (WIH)**

## AIH Foundation

Board of Trustees  
Scholarship Advisory Cmte  
Donor Relations & Fundraising Cmte

## Operations

Board of Directors  
Conference Program Cmte  
Content Portfolio Advisory Group  
Continuing Education Cmte  
Finance Cmte  
Publications Cmte  
International Advisory Group

## Guideline Foundation

Emergency Response & Planning Cmte (ERPGs)  
Standards Advisory Panel

**Active Volunteers Earn CM Points**

# Student AIHce Opportunities

**NEW!** Academic Track

**NEW!** Back to the Community Project

**NEW!** Mentor Lunch-n-Learn

**NEW!** IAMIH Student Connection Lounge

- Special Student-Only Conference Rates & Offers
- Student Local Section Council
- Student Poster Presentations and Awards
- CareerAdvantage & Resource HUB
- PAL First-Timers AIHce Program
- Student Reception
- AIHF Scholarship & Fun Run
- Technical & Professionals Committees



# New Online Community Platform



1200+ discussions  
94 unique communities

- Exclusive Member Driven Community
- Interactive Discussions and Private Forums
- Knowledge Exchanges and Solutions
- Resource Library and Blogs
- Events and Announcements
- Information Delivered via Real-Time or Daily Digest

**New Mentoring Program Coming Soon!**





Occupational Hygiene Association of Ontario



Developing World Outreach Initiative



Total Worker Health Affiliate Organization



# Connect Now!



Look for exclusive AIHA information, updates, and offers



Follow us for important industry news and happenings



Join the discussion with other like-minded professionals



Check out *AIHA Network TV*, the I AM IH™ video series, and view popular uploads



Get more information at [www.aiha.org](http://www.aiha.org)